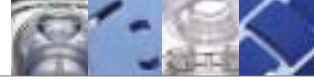




# Mirage Vista™ Mask



## The premium choice

ResMed's Mirage Vista Mask is the premium nasal mask that combines the proven comfort and performance of ResMed masks with an unobtrusive, streamlined design.

## Unobtrusive and nonintrusive

The unique design eliminates the need for forehead support, increases field of vision, and allows patients to wear glasses if required.

## User-friendly

A number of innovative features makes the Mirage Vista easy to fit, put on and take off, disassemble, reassemble, and clean.

## Performance and comfort

The Mirage Vista continues to use the proven and popular ResMed Mirage Cushion Technology. This, together with the Fit Angle Selector and Stabilizing Panels, ensures stability and seal with long-term comfort.



**Set & Forget Headgear**  
no readjustments needed

**Forehead support eliminated**  
allows unobstructed field of vision

**Stabilizing Panels**  
hold headgear in correct position

**One Snap Elbow**  
provides convenience & ease of use

**Fit Angle Selector**  
provides fine tuning for optimal fit

**Easy-lock Parts**  
mean easier handling

### One Snap Elbow

- Simply snaps into position for convenience and ease of use.
- Allows you to fit the patient's mask while the patient breathes normally before the air tube is connected.
- Can be easily removed while the mask is still on the face.
- 360 degrees of rotation and hose swivel means increased mobility during sleep.



One Snap Elbow – easy and convenient



Set & Forget Headgear – no readjustment needed



Easy-lock Parts – easier handling



Mirage Cushion Technology – soft but with optimum seal



The Mirage Vista allows patients to follow their normal bedtime routines prior to sleep.

### Suitable for a range of patients

Recommended first choice for first-time CPAP users, and particularly suitable for a range of “difficult-to-fit” patients:

- anxious/claustrophobic patients
- asymmetrical facial structures
- patients with dexterity problems
- vision-impaired patients.

### Technology Highlight

#### Fit Angle Selector

- Offers five optional mask positions for optimum mask comfort.
- Ensures Mirage Vista conforms to patient's face.
- Left and right sides can be adjusted independently for customizing to asymmetrical facial structures.
- Helps provide further stability and seal without need to tighten headgear.



### Mirage Vista Mask System Product Codes

North & Latin America		Europe & Asia Pacific	
Standard	60000	Standard	60003
Deep	60001	Deep	60004